



1003/23 Hassall Street Parramatta NSW

2 🛏 2 🚿 1 🚗

Brand New Two bedroom for rent " Great Location " Close to everything, it is close to Parramatta, Westfield and restaurants etc.

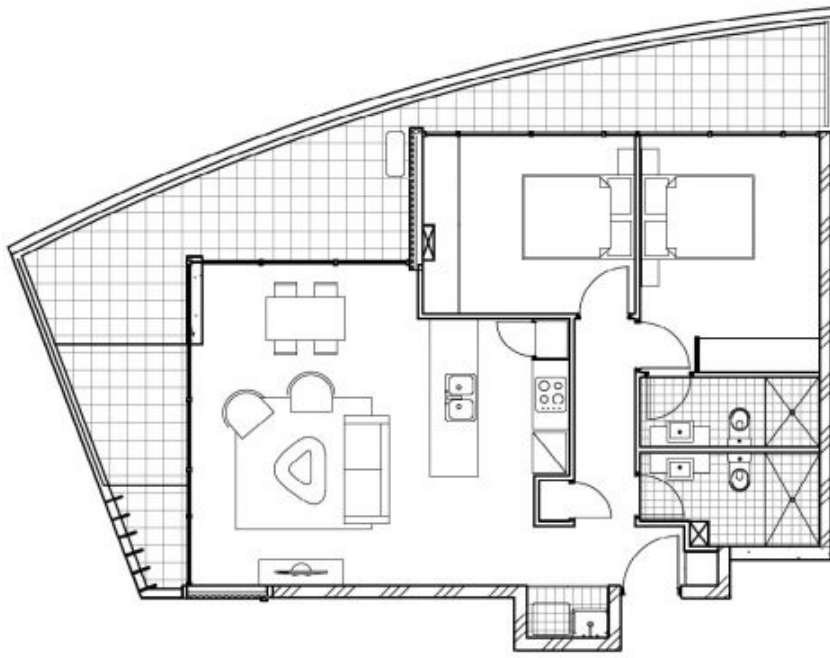
Easy access to Parramatta Train Station, ferry, buses and the M4

Close to Westmead Hospital, University of Western Sydney, the famous private Kings School and close proximity to a range of other prominent schools and parks.

Property Features:

- Full Security building.
- One spacious bedroom.
- Huge lounge and dining.
- Two bathrooms.
- Modern kitchen.
- Gas cooking, Internal laundry & balcony.
- One security car space.

View : <http://www.anyeh.com.au/lease/nsw/parramatta/parramatta/residential/apartment/6196227>



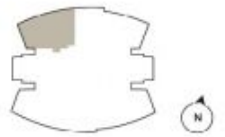
THE GALLERIA
BY NUCCORP

113-117A WIGRAM STREET
& 23-29 HASSALL STREET
PARRAMATTA

UNIT 1003



INTERNAL	72m ²
EXTERNAL	29m ²
TOTAL	101m²



Disclaimer: please note that this floor plan was produced prior to construction. Changes may be made during construction and dimensions, areas, fittings, finishes and specifications are subject to change without notice in accordance with the provisions of the contract for sale. The hardware and furnishings depicted are not included with any sale and purchasers must refer to their contract for sale for the list of inclusions. The position of the furniture and furnishings should not be taken to be indicative of final positions of power points, or connection points and the like. Prospective purchasers must rely on their own expertise. All graphics including site signs and submittals and the like are indicative only. Submittals for services are not depicted.